

FOR LEASE

Dover Village Center Westlake, Ohio

1,000 - 3,400 sq ft available



Description: 26910 - 27020 Center Ridge Road, located just East of Dover on the North side of the street. The Shopping Center is approximately 20,000 square feet.

Co-Tenants: Inline with Syriana's Mediterranean Cuisine, Poteleh, ZuZu Chocolates, Skyline Music, Shear Edge Hair Design, Magic Flash, Merry Maids, Live Fit, etc.

Nearby Tenants: Rite Aid, US Post Office, Lake Carpet, Circle K, Getgo, Dollar Bank, etc.

Demographics:

Population:

1 mile: 7,455

3 miles: 72,093

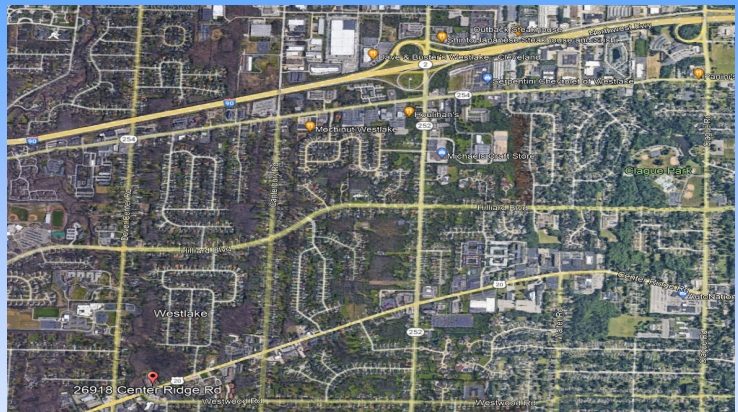
5 miles: 146,499

Average Household Income:

1 mile: \$85,813

3 miles: \$79,004

5 miles: \$77,833



For more information contact:

Craig Cohen

Craig@CohenCommercialGroup.com

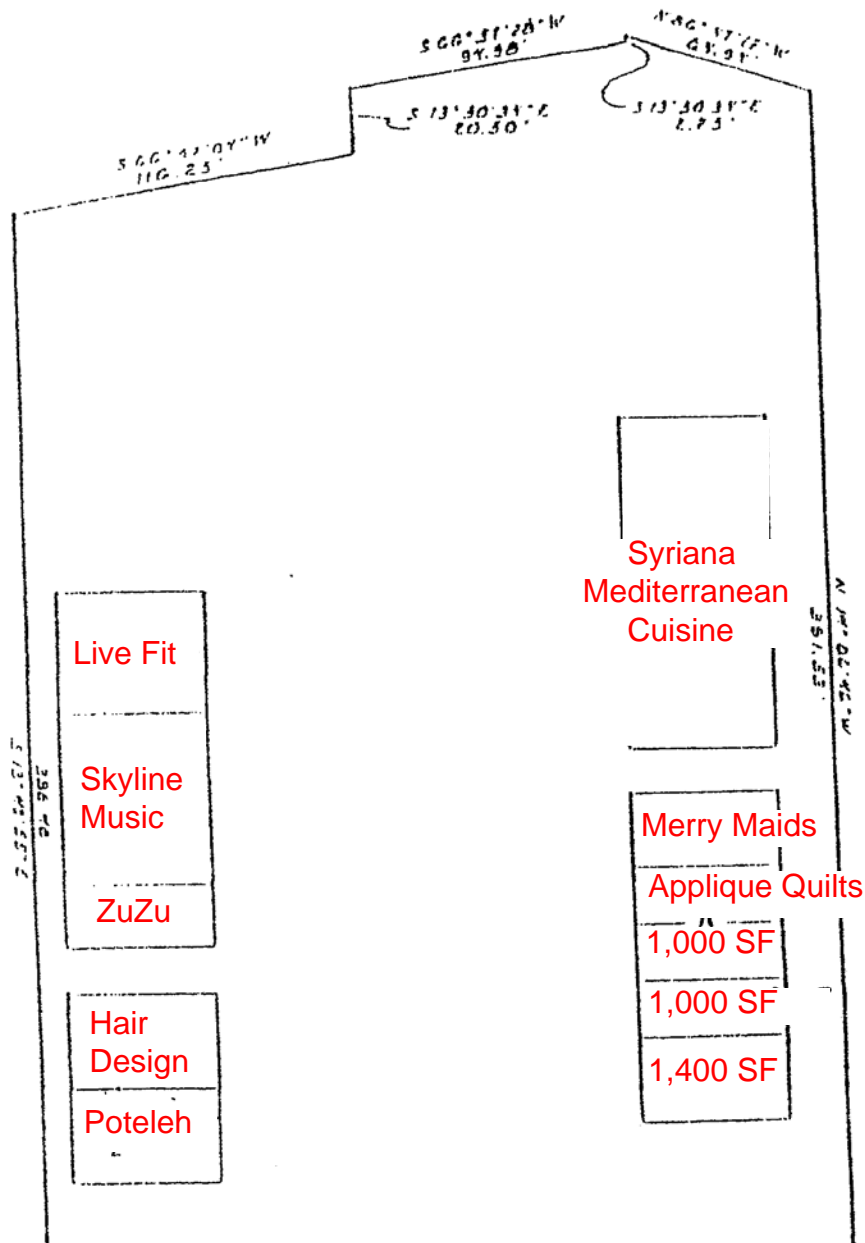


Cohen Commercial Group
6151 Wilson Mills Road, Suite 100
Highland Hts, Ohio 44143
(216) 223-5060

The information submitted herein is not guaranteed. Although obtained from reliable sources, it is subject to errors, omissions, prior sale/lease and withdrawal from the market without notice. Cohen Commercial Group, its affiliates, agents, and employees, and Seller/Landlord make no representations about the accuracy of said information and recommend individual investigation to certify its validity.

EXHIBIT A
LEASE PLAN
DOVER VILLAGE

SCALE: 1" = 50'
MARCH 1987
CITY OF WESTLAKE



Center Ridge Road